

Aizu Wakamatsu City Information

Published by Aizuwakamatsu City

February 2026



Opinions, Suggestions, Change of Address, Subscriptions
City Promotion Division
Phone: 0242-39-1206
Fax: 0242-39-1402
Email:
promotion@tw.city.aizuwakamatsu.fukushima.jp

This newsletter is published by the Public Relations Section of City Hall, and is comprised of translated excerpts from the monthly Japanese newsletter, "Shisei Dayori".

Language Assistance
The Aizu Wakamatsu International Association
Open: 9:30 - 17:30
Phone: 0242-27-3703 Fax: 0242-27-3704
E-mail: aizukokusai@awia.jp
Office Closed: Every Sunday, Monday, and national holidays.

New Fees for Household Garbage Disposal!

家庭ごみ処理有料化が始まります！

The city is introducing a paid household waste disposal system starting from April 1st (Wed). Here we'll provide an overview of how to dispose of your trash from April, as well as explain the purpose and key points of the new system.

●Contact...Environmental Division (☎27-3961)



New Disposal Rules from April

●Pay-per-throw Disposal

Burnable/Non-burnable Garbage

Place waste into designated garbage bags and leave at your assigned garbage station. For larger items that will not fit into a bag, please purchase and attach a Garbage Sticker before leaving it in your garbage station.

Burnable Garbage
(Orange)



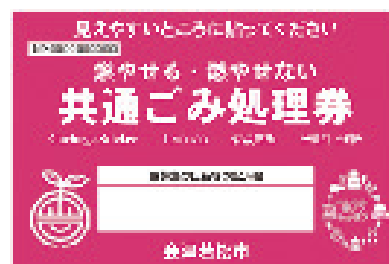
Non-burnable Garbage
(Blue)



Designated Garbage Bags

or

Garbage Stickers



Oversized Garbage

After applying for collection with the Environmental Division, attach an Oversized Garbage Sticker to the item and leave it in front of your home.

Oversized Garbage Sticker



Oversized Garbage Sticker

Direct Facility Disposal

Do not use designated bags or Garbage Stickers. After having your garbage inspected at the Environmental Division, take your garbage directly to the disposal facility.

▶ Fees: ● Under 50kg = ¥ 800 ● Over 50kg = ¥ 800 + excess fee (¥ 160/10kg)

●Free Disposal

Recyclables

Cans, glass bottles, PET bottles, plastic containers, packaging/products, recycled paper
Continue to sort as you have, and place at your garbage station in a clear or translucent bag.
※Collection of old clothes at current pick-up points will end on March 31st (Tue).

Diapers

Place in a clear or translucent bag, write “diapers” (おむつ) clearly on it, and deliver it to your garbage station on burnables collection day.

Volunteer Trash Pick-up Waste

Collect designated bags from the Environment Division, and leave the trash in your garbage station.

The Garbage Facility is Very Busy

If you are bringing trash directly to the garbage disposal facility, please allow yourself plenty of time. Please note that a preliminary inspection of the garbage is required at the Environmental Division (Oite Second Office).

Distribution of Designated Garbage Bags Trial Set

Before the new system begins, the city is distributing a trial set of the new garbage bags. Please check the shape and material of the bags. This is the only distribution of bags; please purchase the bags you need at a retailer before the start of April.

▼Items: Designated Burnable Garbage and Non-burnable Garbage bags (1 roll of 10 - 10L bags each)

▼Recipients: Heads of household registered with the city as of January 31st.

▼Distribution Period: By March 20th (Fri) (public holiday).

※No application required

▼Other: ◎ Please use the trial bags from April 1st (Wed)

◎ The planned distribution end date is March 20th. If you have not received your bags yet, please do not worry, and wait patiently.

◇ Contact...Environmental Division (☎ 27-3961)



Let's Take Out the Trash Properly!

正しく出そう ごみと資源物

Please take out your trash and recycling by following the rules and putting it in your designated Garbage Station before 8:30am on collection day.

Holiday/Off-Day Garbage Collection

Wednesday 11 February (public holiday) - no collection

Monday 23 February (public holiday) - burnables only for areas with Monday collection days

Would you like to help the Film Commission (FC)?

フィルムコミッションの活動に参加しませんか

We are looking for “FC Supporters” who can help out as extras etc. in films and TV dramas, people who are willing to volunteer their stores or homes as filming locations, and businesses that can provide bento meals on location for cast and crew.

▼Apply ◎FC Supporters: send your name and email address to the Tourism Division (kanko@tw.city.aizuwakamatsu.fukushima.jp) ※Under 18s require parental consent.

◎Filming locations/Bento providers: Contact the Tourism Division directly.

◇Contact...Tourism Division (☎39-1251)



Avoid Accidents During Snow Removal

除雪中の事故に気を付けましょう

Things to consider to prevent accidents:

- Wear safety equipment such as helmets or harnesses, don't work alone.
 - When using snow blowers, perform regular checks and maintenance, and turn off equipment before attempting to clear blockages.
 - While clearing snow, have a cellphone etc. with you in case of accidents or sudden illness.
- ◇Contact...Aizu Wakamatsu Fire Department (☎25-1202)



Avoid Kerosene Spills!

灯油の流出事故を予防しましょう

Each year, there are accidents where kerosene spills occur due to people being distracted while dividing the kerosene into smaller containers. Never leave your kerosene unattended while filling smaller containers.

◇Contact...Environmental Division (☎23-4700)

Job Fair in Aizu

就職フェア in あいづ

Approximately 70 companies from the Aizu region will be gathering for this event. Participants can receive company overviews, information about job openings, and participate in interviews.

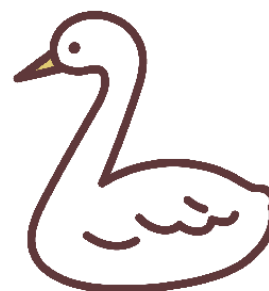
- ▶ Date/Time: Saturday 7 February, 1:00pm-4:00pm ※Registration open from 12:00pm-3:30pm
- ▶ Location: Apio Space (West Interchange)
- ▶ Target audience: Job seekers
- ◇ Contact...Job Fair in Aizu Executive Committee (Commerce and Industry Division, ☎ 39-1252)

Natural Environment Class Bird Watching at Lake Inawashiro

自然環境教室 猪苗代湖野鳥観察会

Observe wild birds and learn about their habits and ecology at Lake Inawashiro, a Ramsar Convention-registered wetland site.

- ▶ Date/Time: February 22nd (Sun) 10:00~noon
- ▶ Location: Sakikawa-hama, Minato-machi (Meet at Minato Community Center)
- ▶ Instructor: Mitsuta Shinya (Wild Bird Society of Japan, Aizu Branch)
- ▶ Target audience: Elementary school students and above (Children in Grade 3 or under must be accompanied by a parent or guardian)
- ▶ Places available: 24 participants
- ▶ Register by: Tuesday 17 February
- ◇ Contact...Environmental Division (☎23-4700)



Radiation Doses as of January 15th

housyasenryou jouhou 1gatu 15niti
放射線量情報 (1/15)

Measurement Location	Measured Value	Measurement Location	Measured Value
Aizu Wakamatsu CityHall	0.04	Kita Public Hall	0.07
Aizu Wakamatsu Station	0.06	Kozashi-machi Takaku	0.07
Higashiyama Elementary School	0.07	Kozashi-machi Kitashigo	0.04
Iimoriyama Mountain Tourist Information Center	0.06	Kawahigashi-machi Takatsuka	0.06
Ikki-machi Tsuruga	0.06	Kawahigashi-machi Kumanodo	0.08
Matsunaga Danchi	0.06	Kawahigashi-machi Hirota	0.03
Yanagiwara-machi	0.08	Kitaaidu-machi Shimoarai	0.07
Monden-machi Niidera	0.07	Kawanami Elementary School	0.07
Minami Public Hall	0.07	Oto Public Hall	0.04
Aizu General Athletic Park	0.05	Minato Citizen's Center	0.02

※Measured in microsieverts / hour

After-Hours Pharmacies

Kyuuujitsu touban Yakkyoku
休日当番薬局

February. 1st (Sun)	<ul style="list-style-type: none"> ●Tsuruga pharmacy Matsunaga-ten (Matsunaga 1 chome ☎ 23-9488) ●Mizuki pharmacy (Fujiwara 1 chome ☎ 37-3088)
February. 8th (Sun)	<ul style="list-style-type: none"> ●Hiro pharmacy (Monden-machi Hiyoshi ☎ 36-5582) ●Kusunoki pharmacy (Shinyoko-machi ☎ 38-3878)
February. 11th (Wed)	<ul style="list-style-type: none"> ●E-ru Pharmacy Sengoku-ten (Higashisengoku 1 chome ☎ 36-6011)
February. 15th (Sun)	<ul style="list-style-type: none"> ●Kabotya pharmacy (Niideraminami 1 chome ☎ 29-1214) ●Orange Pharmacy Kimoto (Syowa-machi ☎ 93-6301)
February. 22th (Sun)	<ul style="list-style-type: none"> ●Be-su Pharmacy Yamami-machi (Yamami-machi ☎ 93-6330) ●Aiai Yakkyoku (Jousai-machi ☎ 29-6666)
February. 23th (Mon)	<ul style="list-style-type: none"> ●Kuo-ru pharmacy Nishiwakamatsu-ten (Zaimoku-machi 1chome ☎ 36-6589) ●Edoya Pharmacy (Nisshin-machi ☎ 27-0534)
March. 1st (Sun)	<ul style="list-style-type: none"> ●Keyaki Yakkyoku (Oo-machi 1chome ☎ 29-5252) ●Sakura Yakkyoku Miyamachi-ten (Miya-machi ☎ 38-2303)

Emergency medical care at night

Yakan Kyuubyou center
夜間急病センター

The Night Emergency Clinic adopted a reservation-only policy. If you need a medical examination, please call ahead to make a reservation in advance. *open every day of the year

▶ **Treatment field...** internal medicine, pediatrics

▶ **Reservations/Place...** Night Emergency Clinic (Yakan Kyubyo Center) (☎ 28-1199) (Yamagamachi 1-22)

▶ **Consultation...** 19:00-23:00

▶ **Reception...** 18:30- 22:30

▼ Attention:

Aizu Wakamatsu Area Code=0242 *Please dial the area code first.

After-Hours Medical Facilities

Kyuujitsu touban Iin
休日当番医院

February. 1st (Sun)	Internalmedicine・Pediatrics	Watanabe clinic わたなべクリニック	24-0506	Matsunaga 1 chome
	Surgery	Endo clinic えんどうクリニック	33-0700	Fujiwara 1 chome
	Dentistry	Kikuchi Dental clinic 菊地歯科医院	27-8111	Kitaaoki
February. 8th (Sun)	Internal medicine	Ito Internalmedicine,Gastroenterology clinic いとう内科消化器科クリニック	38-3733	Monden-machi Hiyoshi
	Surgery	Aizu clinic 会津クリニック	38-1150	MZaimoku-machi 1 chome
	Dentistry	Kimi Dental・Oral surgery clinic きみ歯科・口腔外科クリニック	93-6487	Monden-machi Kuroiwa
February. 11th (Wed)	Internal medicine	Kachino-machi clinic 徒之町クリニック	26-6181	Kachino-machi
	Surgery	Yamauchi Orthopedics clinic やまうち整形外科クリニック	85-7442	Higashisengoku 1 chome
	Dentistry	KurikiHiromasa Dental clinic 栗城宏昌歯科医院	28-4350	Tatewaki-machi
January. 15th (Sun)	Internalmedicine・Pediatrics	Niidera clinic にいでら診療所	38-3676	Monden-machi Niidera
	Surgery	Rikishindo Higuchi Ophthalmology 力神堂ひぐち眼科	37-2977	Shouwa-machi
	Dentistry	Kuriki Dental clinic 栗城歯科医院	24-6711	Takizawa-machi
January. 22th (Sun)	Internalmedicine・Pediatrics	Yamami child Clinic やまみこどもクリニック	23-4115	Yamami-machi
	Surgery	Senba Ear, Nose, and Throat Clinic 仙波耳鼻咽喉科医院	26-4133	Monden-machi Hiyoshi
	Dentistry	OSan Dental clinic さんデンタルクリニック	77-0032	Sengoku-machi
January. 23th (Mon)	Internalmedicine・Pediatrics	Teduka clinic 手塚医院	27-5618	Zaimoku-machi 1 chome
	Surgery	Shiba clinic 志波医院	22-0289	Baba-machi
	Dentistry	Kuwahara Dental clinic 桑原歯科医院	26-4023	Nisshin-machi
March. 1st (Sun)	Internalmedicine・Pediatrics	Yoshida Internalmedicine clinic 吉田内科	27-0537	Naka-mach
	Surgery	Kobari Ear,nose,and throat clinic こばり耳鼻咽喉科クリニック	29-0800	Miya-machi
	Dentistry	Niidera family Dental clinic 飯寺ファミリー歯科クリニック	27-0648	Iideraminami 3-chome

▶ Consultation Hours... ◎ *Internal Medicine・External Medicine・Pediatrician* ; 9:00 ~ 17:00

◎ *Dentist* ; 10:00 ~ 16:00

▶ Caution... You can check the doctor-on-duty for holidays on the City Homepage.



You can freely browse information from the city government at any time!

いつでも気軽に市政だよりを見ることができます！

Feel free to try out “Catalog Pocket,” an electronic web browsing service from any smartphone or computer. This service offers multiple languages and is free to use. ※ The user is responsible for personal communication fees

●Contact... City Promotion Division (☎39-1206)



If you are receiving this newsletter and plan to change your address or leave Japan, please make sure to tell us of your new address or your departure date so that we may forward or cancel this newsletter.

Please contact us by phone, fax, or e-mail as soon as possible. City Promotion Division, Aizu Wakamatsu City Hall 3-46 Higashi Sakae-machi, Aizu Wakamatsu City, Fukushima 965-8601

• TEL: 0242-39-1206 FAX: 0242-39-1402

• Email: promotion@tw.city.aizuwakamatsu.fukushima.jp

★Visit our home page! <http://www.city.aizuwakamatsu.fukushima.jp>
/ in English and 中文(体中文 繁体中文) 한글 ไทย

City Public
Homepage



Living
Information

