

# Aizu Wakamatsu City Information

Published by Aizuwakamatsu City

July 2025



**Opinions, Suggestions, Change of Address, Subscriptions**  
City Promotion Division  
Phone: 0242-39-1206  
Fax: 0242-39-1402  
Email:  
[promotion@tw.city.aizuwakamatsu.fukushima.jp](mailto:promotion@tw.city.aizuwakamatsu.fukushima.jp)

This newsletter is published by the Public Relations Section of City Hall, and is comprised of translated excerpts from the monthly Japanese newsletter, "Shisei Dayori".

**Language Assistance**  
The Aizu Wakamatsu International Association  
Open: 9am-5:45pm  
Phone: 0242-27-3703 Fax: 0242-27-3704  
E-mail: [mail@awia.jp](mailto:mail@awia.jp)  
Holidays: Every Sundays, Mondays, and national holidays.

## Aizu Coin Rewards Campaign

会津コイン還元事業を実施します

### Get great bargains at participating stores!

Shop at participating stores/restaurants and pay with the Digital Wallet 'Aizu Coin' and get 25% of the amount spent back as Aizu Coin the following month!

▼ **Campaign Period:** July 1st – end of January 2026 (Planned) \*Campaign will end when budget limit reached

▼ **Rewards Limit:** Up to 10,000yen per person \*Limit for money-back for stores based outside of Aizu is 5,000yen

▼ **Other:** For list of participating stores, how to download the 'Aizu Wallet' app, etc. please check out the City Homepage

● **Contact:** Commerce Division (☎39-1252)

### How to Participate

#### STEP 1

Download the 'Aizu Wallet' app



#### STEP 2

Connect your account from your financial institution to use as your 'Aizu Coin'



#### STEP 3

Top up your 'Aizu Coin' from the connected account



#### STEP 4

Pay with 'Aizu Coin' at participating stores/restaurants



#### STEP 5

At the end of the following month, the equivalent of 25% of payments will be returned as 'Aizu Coin'



## City Residents Swimming Competition 市民水泳大会

▶ **Categories/Times:** ◦ **Diving:** August 2nd (Sat) from 10:00~ ◦ **Race:** August 17th (Sun) \*Elementary Aged from 9:00~, Junior High/General from 13:00~  
▶ **Place:** Aizu Swimming Pool (City Pool)  
▶ **Open to:** People living, studying, working in Aizuwakamatsu, from elementary age and up.  
▶ **How to Apply:** Fill in the application, and send it in, alongside the ¥500 participation fee to the Sports Promotion Division by July 23rd (Wed). \*Elementary and Junior High aged children apply through their schools by July 15th (Tue).  
**Contact:** Sports Promotion Division (☎39-1306)



## Manabeko History and Culture Lecture まなべこ歴史文化講座

### The Small World at Tsuruga-jo Castle: Moss

Learn how to compile local research, using research on Tsuruga-jo's moss plants as a base.

▶ **Date:** July 20th (Sun) 13:30~  
▶ **Place:** Historical Records Center "Manabeko"  
▶ **Lecturer:** Aizu Biology Association President: Takizawa Reiko  
▶ **Limit:** 40 people  
▶ **Aimed at:** Elementary grade 4 and up  
**Contact:** Historical Records Center "Manabeko" (☎27-2705)



## Wakasato-ko Lake Refreshing Festival 2025

若郷湖さわやかフェスティバル2025

▶ **Date:** August 2nd (Sat) 9:30-14:00  
▶ **Place:** Okawa Dam, Wakasato-ko Lake East Park  
▶ **Details:** Taiko Performance, Okawa Dam Tours, Dam Lake Patrol, Fish Grabbing etc.  
**Contact:** Urban Development and Improvement Division (☎39-1275)



## Use the Main City Office's Multipurpose Space, Citizens' Hall, Old Building Plaza, for free!

市役所本庁舎の多目的スペース・市民ホール・旧館前広場が無料で利用できます

- ▶ **Main City Office Facilities Available for Use:** Multipurpose Space, Citizens' Hall, Old Building Plaza
  - ▶ **Usage Time:** 9:00-19:00
  - ▶ **Available Period:** ◎ Events etc.: Up to 3 days ◎ Exhibitions etc.: Up to 7 days
  - ▶ **How to Apply:** Contact the General Affairs Division from 2 months before the month you will use it, up to 3 days before. \*If multiple requests are made for the same period, decision will be decided by lottery.
  - ▶ **Other:** For more information about usage etc, check out the City Homepage.
- Contact:** General Affairs Division ( ☎ 39-1211)



Multipurpose Space



Citizens' Hall



Old Building Plaza

## Fun Aqua Sports Lessons

楽しいアクアスポーツ教室

### Adult Swim

- ▶ **Date:** Aug 19 (Tue) – Sept 9 (Tue), every Tuesday night 18:50-19:50 (4 times total)
  - ▶ **Aimed at:** people over 18 years of age
  - ▶ **Limit:** 10 people
  - ▶ **Cost:** Only the pool use fee
  - ▶ **Place/Sign-up:** Community Pool (Kawahigashi)
- Contact:** Community Pool (Kawahigashi-machi ☎ 75-5201)

## Let's Practice Water Safety

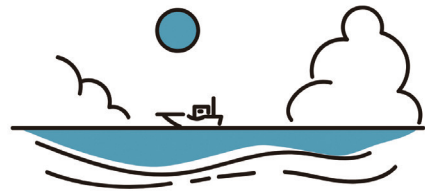
水の事故に気を付けましょう

The summer season provides more opportunities to enjoy outdoor leisure activities, at lakes, in the mountains etc. but there are things to be careful about in nature. Let's avoid risky activities and have fun this summer.

### How to prevent accidents around water

- Do not enter dangerous areas.
- Don't swim if you're not feeling well, or have been drinking alcohol.
- Doublecheck the weather forecast, and don't force yourself out into dangerous weather.
- Always wear a life jacket when playing near water.
- Supervise children when playing in or around water.
- Contact 119 immediately in the event of an accident.

.....  
 ◎ **Contact:** AizuWakamatsu Fire Department ( ☎ 25-1200), Disaster Prevention Division ( ☎ 39-1227)



## Mixer Event: Bee Garden Fun

男女の交流イベント「ビーガーデン交流会」

Experience the wonder of honey at this fun mixer event where you can enjoy lunch while getting in touch with the world of honey. Why not join in?

▶ **Date:** July 26th (Sat) 11:30-15:00

▶ **Place:** Matsumoto Bee Farm Sohonojo (Boutique de miele) (Aizu, Yanagiwaramachi 4chome)

▶ **Aimed at:** Mainly single 20 – 35 year olds to which the following apply: ◎ Live or work within the City ◎ Live outside of the City, but are interested in, or wanting to live in the City.

▶ **Cost:** 3500yen (Same for men or women)

▶ **Limit:** 10 each, men and women

▶ **How to sign-up:** Apply through the Fukushima Marriage/Child-rearing Support Centre homepage (<https://hapifukunavi.jp/>)

▶ **Sign-up deadline:** July 17th (Thu)

▶ **Contact:** Fukushima Marriage/Child-rearing Support Centre ( ☎ 024-544-0070), City Promotion Division ( ☎ 39-1202)



## Radiation Doses as of May 15th

housyasenryou jouhou 4gatu 15 niti  
放射線量情報 (5/15)

Measurement Location	Measured Value	Measurement Location	Measured Value
Aizu Wakamatsu CityHall	0.04	Kita Public Hall	0.09
Aizu Wakamatsu Station	0.07	Kozashi-machi Takaku	0.08
Higashiyama Elementary School	0.08	Kozashi-machi Kitashigo	0.05
Imoriyama Mountain Tourist Information Center	0.07	Kawahigashi-machi Takatsuka	0.09
Ikki-machi Tsuruga	0.08	Kawahigashi-machi Kumanodo	0.07
Matsunaga Danchi	0.06	Kawahigashi-machi Hirota	0.04
Yanagiwara-machi	0.08	Kitaazumi-machi Shimoarai	0.10
Monden-machi Niidera	0.08	Kawanami Elementary School	0.07
Minami Public Hall	0.08	Oto Public Hall	0.04
Aizu General Athletic Park	0.07	Minato Citizen's Center	0.04

※Measured in microsieverts / hour

## After-Hours Pharmacies

Kyuujitsu touban Yakkyoku  
休日当番薬局

<b>June.6th (Sun)</b>	● Kosumo Dispensing Pharmacy Yonedai ten (Yonedai 1chome ☎ 38-3850)
<b>June.8th (Sun)</b>	● Tanpopo Pharmacy Hon-machi ten (Hon-machi ☎ 38-2565)
<b>June.15th (Sun)</b>	● Dispensing pharmacy Zene Fa-mu Tateumaten (Tateuma-machi ☎ 85-8568)
<b>June.22th (Sun)</b>	● Aizu Dispensing pharmacy (Byakko 2chome ☎ 36-7672) ● Kosumo Dispensing Pharmacy Nishisakamachi ten (Nishisakae-machi ☎ 36-6039)
<b>June.29th (Sun)</b>	● Aiai Yakkyoku (Jousai-machi ☎ 29-6666)
<b>August.3rd (Sun)</b>	● Sengoku Chouzai Yakkyoku (Sengoku-machi ☎ 23-8336)

## Emergency medical care at night

Yakan Kyuubyo center  
夜間急病センター

The Night Emergency Clinic adopted a reservation-only policy. If you need a medical examination, please call ahead to make a reservation in advance. \*open every day of the year

▶ **Treatment field...** internal medicine, pediatrics

▶ **Reservations/Place...** Night Emergency Clinic (Yakan Kyubyo Center) (☎ 28-1199) (Yamagamachi 1-22)

▶ **Consultation...** 7:00pm-11:00pm

▶ **Reception...** 6:30pm - 10:30pm

## ▼ Attention:

Aizu Wakamatsu Area Code=0242 \*Please dial the area code first.

## After-Hours Medical Facilities

Kyuujitsu touban Iin  
休日当番医院

July.6th (Sun)	Internalmedicine ・ Pediatrics	Koshimabara Internal medicine clinic 小島原内科クリニック	36-6533	Yonedai 1 chome
	Surgery	Shiba clinic 志波医院	22-0289	Baba-machi
	Dentistry	Kamio Dental clinic かみお歯科医院	24-9273	Chuo 1 chome
July.13th (Sun)	Internalmedicine ・ Pediatrics	Sato Clinic 佐藤医院	26-3515	Nishisakae-machi
	Surgery	Ami Woman's clinic あみウイメンズクリニック	37-1456	Yasumi-machi
	Dentistry	Kikuchi Dental clinic 菊地歯科医院	27-8111	Kitaaoiki
July.20th (Sun)	Internal medicine	Aizu Neurology clinic あいづ脳神経内科クリニック	23-9333	Machikita-machi nakasawa
	Surgery	Tateuma Clinic たてうまクリニック	29-2112	Tateuma-machi
	Dentistry	Kimi Dental ・ Oral surgery clinic きみ歯科 ・ 口腔外科クリニック	93-6487	Monden-machi Kuroiwa
July.21th (Mon)	Internal medicine	Seita nternal medicine ・ Cardiology clinic 清田内科循環器クリニック	85-6881	Byakkom 2chome
	Surgery	Ear, nose, andthroat Suzuki Clinic 耳鼻咽喉科鈴木医院	28-3387	Nishisakae-machi
	Dentistry	Watanabe Yuzou Dental clinic 渡辺ゆうぞう歯科クリニック	37-2232	Ishido-machi
July.27th (Sun)	Internal medicine ・ Pediatrics	Arai Internalmedicine ・ Cardiology Clinic あらい内科循環器科クリニック	29-1133	Josai-machi
	Surgery	Anazawa Ear,nose,and throat clinic 穴沢耳鼻咽喉科医院	29-0033	Tenjin-machi
	Dentistry	Kuriki Dental clinic 栗城歯科医院	24-6711	Takizawa-machi
August.3rd (Sun)	Internal medicine ・ Pediatrics	Clinic Araki クリニック荒木	32-9229	Kouzashi-machi Kurokawa
	Surgery	Kabeya Ear, nose, andthroat Clinic かべや耳鼻咽喉科	24-4133	Sengoku-machi
	Dentistry	KurikiHiromasa Dental clinic 栗城宏昌歯科医院	28-4350	Tatewaki-machi

▶ Consultation Hours... ◎ *Internal Medicine ・ External Medicine ・ Pediatrician* ; 9:00am ~ 5:00pm

◎ *Dentist* ; 10:00am ~ 4:00pm

▶ Caution... You can check the doctor-on-duty for holidays on the City Homepage.

## You can freely browse information from the city government at any time!

いつでも気軽に市政だよりを見ることができます！

Feel free to try out “Catalog Pocket,” an electronic web browsing service from any smartphone or computer. This service offers multiple languages and is free to use. ※ The user is responsible for personal communication fees

●Contact... City Promotion Division (☎39-1206)



If you are receiving this newsletter and plan to change your address or leave Japan, please make sure to tell us of your new address or your departure date so that we may forward or cancel this newsletter.

Please contact us by phone, fax, or e-mail as soon as possible. Public information and Public Hearing Section (Kouhou Koucho group), Aizu Wakamatsu City Hall 3-46 Higashi Sakae-machi, Aizu Wakamatsu City, Fukushima 965-8601

• TEL: 0242-39-1206 FAX: 0242-39-1402

• Email: [promotion@tw.city.aizuwakamatsu.fukushima.jp](mailto:promotion@tw.city.aizuwakamatsu.fukushima.jp)

★Visit our home page! <http://www.city.aizuwakamatsu.fukushima.jp>  
/ in English and 中文 (体中文 繁体中文) 한글 ไทย

City Public  
Homepage



Living  
Information

