

# Aizu Wakamatsu City Information

Published by Aizuwakamatsu City

June 2025



**Opinions, Suggestions, Change of Address, Subscriptions**  
City Promotion Division  
Phone: 0242-39-1206  
Fax: 0242-39-1402  
Email:  
[promotion@tw.city.aizuwakamatsu.fukushima.jp](mailto:promotion@tw.city.aizuwakamatsu.fukushima.jp)

This newsletter is published by the Public Relations Section of City Hall, and is comprised of translated excerpts from the monthly Japanese newsletter, "Shisei Dayori".

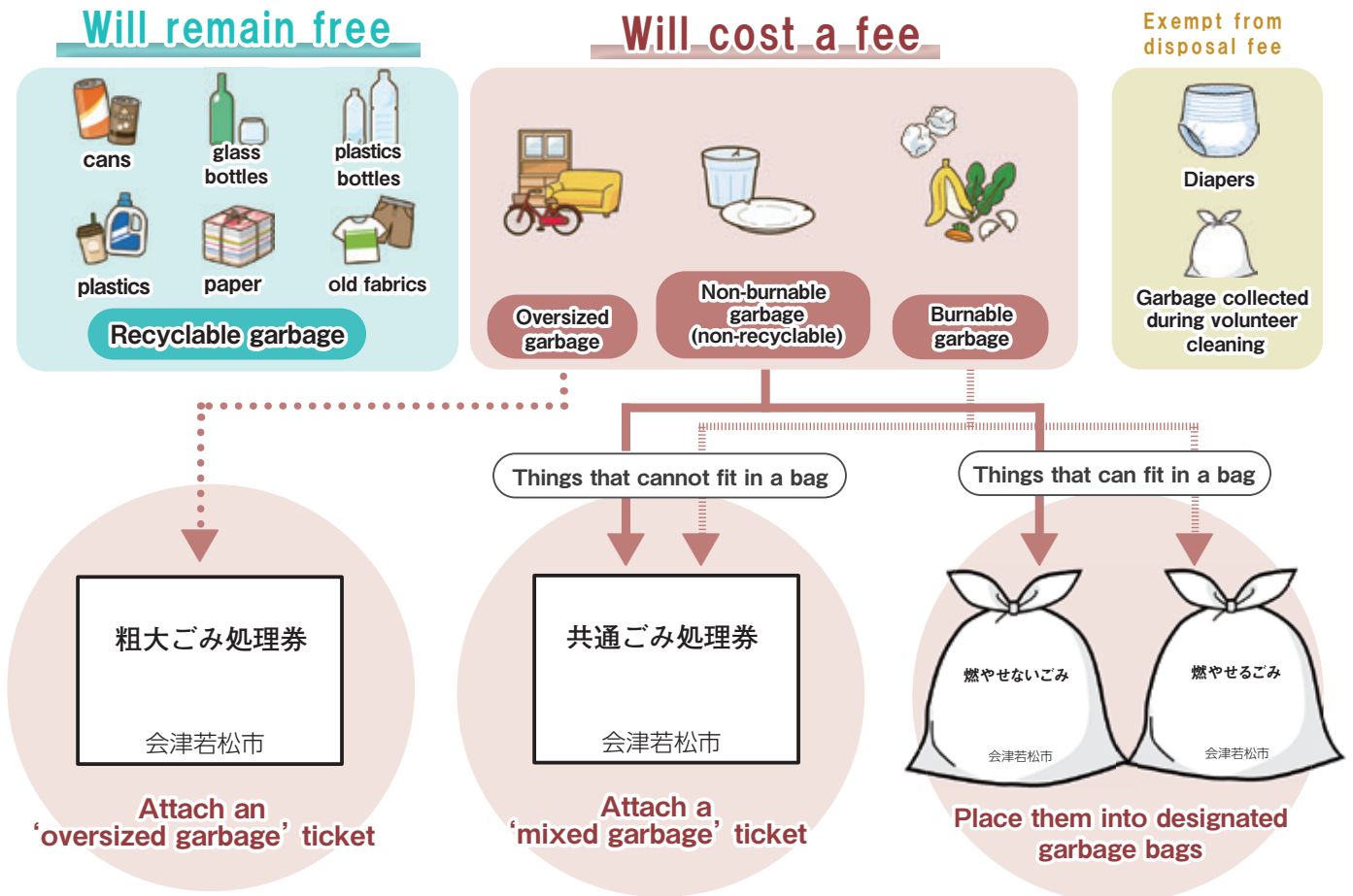
**Language Assistance**  
The Aizu Wakamatsu International Association  
Open: 9am-5:45pm  
Phone: 0242-27-3703 Fax: 0242-27-3704  
E-mail: [mail@awia.jp](mailto:mail@awia.jp)  
Holidays: Every Sundays, Mondays, and national holidays.

[Special Feature]  
**Starting a new fee-based household garbage disposal system.**

家庭ごみ処理有料化制度が始まります

Starting from April 2026, the City of AizuWakamatsu will introduce a pay-as-you-throw garbage disposal system. This special feature will explain the general guidelines of the new system.

**What kind of garbage will now cost money to dispose of?**

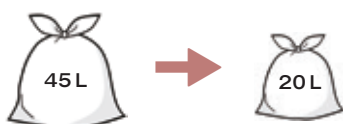


**Requests to Citizens**

● **Try out using smaller garbage bags before the pay-per-throw system starts!**

If you think about how you'll be using 10L or 20L bags, it becomes easier to separate paper and plastics from your garbage.

You can still get quite a bit of garbage into smaller bags, so try downsizing your garbage bags now!



● **Keep your old fabrics until 2026**

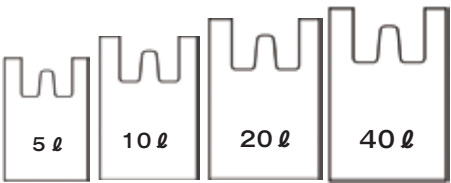
From April 2026, you will be able to throw away old fabrics like towels, old clothes, etc. from your neighbourhood garbage station. The fabric collected will be recycled, so hold onto them instead of throwing them into the burnable garbage for now.



**Q & A**

**Q.1 How much will household garbage disposal cost, and how do I pay for it?**

**A.1** Garbage disposal fees will be included in the cost of ‘designated garbage bags,’ ‘mixed garbage tickets,’ and ‘oversized garbage tickets’ that will be sold at shops like supermarkets, drugstores, and home centers.  
You will be paying your garbage fee by buying and using these bags/tickets to throw away your garbage.



**Q.2 Can we really lessen garbage by introducing a pay-per-throw disposal system?**

**A.2** Taking a look at the success of other municipalities that have implemented pay-per-throw garbage disposal systems, we can see that the fee system is highly effective at reducing garbage. In the case of AizuWakamatsu City, we expect the new system will be able to reduce around 20% of waste, compared to the current amount.

**Q.3 How much will I have to pay for this?**

**A.3** The standard fee for burnables and non-burnables will be about 2yen per 1L of garbage. The cost is expected to be about 470yen for an average family (2.3 people), calculated with the expected amount of garbage produced after the implementation of the pay-per-throw system.

.....  
● Contact: Environment Division( ☎ 27-3961)



## Disaster Prep Bottle

### 防災のススメ

Some people have emergency stockpiles at home, or a go-bag ready, in case disaster strikes. Emergency stockpiles are in case there are goods disruptions directly after a disaster, and contain water, food etc., put together with the idea that you'll still be living at home. Go-bags contain only the bare essentials that can be carried and are for the event of or threat of an emergency that requires you to leave your home to go to safe place, like an evacuation shelter.

You can keep an emergency stockpile or go-bag at home, but what about when you are out and about? Recently, it is becoming more common for people to use a 'Disaster Prep Bottle': a bottle shaped item that contains disaster prep goods in it. A typical Disaster Prep Bottle has a volume of around 500ml, and contains household medicines, plastic bags, compressed towel, bandages, a whistle, small light, sterilizing wipes, non-perishable food, some money and more. There are a variety of ways to prepare one; instead of a bottle, you can prepare a small pouch containing items that fit your needs and situation. You never know when a disaster will hit, especially earthquakes. We recommend carrying around a 'Disaster Prep Bottle' to stay prepared for disasters while going out.

◆**Inquiries:** Crisis Management Division (☎39-1227)

## NishiWakamatsu Station Saturday Market

### 西若松駅土曜駅市

- ▶ **Date:** June 7th (Sat) ~ Oct 25th (Sat) – Every Saturday, 8:30am-9:30am
- ▶ **Place:** NishiWakamatsu Stn. East Entrance
- ▶ **Details:** Buy delicious produce from the members of the JA Aizu Yotsuba Women's Club Wakamatsu Chapter
- **Contact:** Project Planning Division (☎ 28-5885)

## Manabeko History and Culture Lesson 「A Walk Through Okuboyama」

### まなべこ歴史文化講座「大窪山を歩こう」

The first half will be inside, learning about Okuboyama. The second half will be actually walking there!

- ▶ **Date:** June 15th (Sun) 13:30~
- ▶ **Place/Apply to:** Historical Records Centre 'Manabeko'
- ▶ **Lecturer:** Culture and Sports Division Staff
- ▶ **Participants:** up to 20 people
- ▶ **Open to:** People aged ~10+ (Elem. Grade 5 and older)
- ▶ **Applications Start:** June 3rd (Tue)
- **Contact:** Historical Records Centre 'Manabeko' (☎ 27-2705)



## Announcing the Winners for the #Aizu no Takara Sagashi Photo Contest

「#会津の宝探し」フォトコンテストの結果をお知らせ

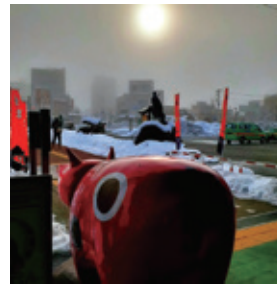
### List of Entries



The winners have been chosen for the #会津の宝探し 'Aizu no Takara-sagashi' Photo Contest that closed on April 30th. Thank you for all your votes!

► Top Prize Winner: @ t.12.19morimoto

► Runner-up: @tk.suzaku



Let's show off the Takara (treasures) of Aizu on Instagram. The City is asking everyone to upload photos of the wonderful places in the city or nearby to Instagram and hashtag them with '会津の宝探し' (Aizu no Takara-sagashi.) Why not show off the wonder of Aizu?

.....  
● Contact: City Promotion Division (☎ 39-1206)

## Radiation Doses as of May 15th

housyasenryou jouhou 4gatu 15 niti  
放射線量情報 (5/15)

Measurement Location	Measured Value	Measurement Location	Measured Value
Aizu Wakamatsu CityHall	0.04	Kita Public Hall	0.09
Aizu Wakamatsu Station	0.07	Kozashi-machi Takaku	0.09
Higashiyama Elementary School	0.07	Kozashi-machi Kitashigo	0.05
Imoriyama Mountain Tourist Information Center	0.07	Kawahigashi-machi Takatsuka	0.08
Ikki-machi Tsuruga	0.08	Kawahigashi-machi Kumanodo	0.08
Matsunaga Danchi	0.07	Kawahigashi-machi Hirota	0.04
Yanagiwara-machi	0.07	Kitaizu-machi Shimoarai	0.10
Monden-machi Niidera	0.09	Kawanami Elementary School	0.08
Minami Public Hall	0.07	Oto Public Hall	0.04
Aizu General Athletic Park	0.08	Minato Citizen's Center	0.04

※Measured in microsieverts / hour

## After-Hours Pharmacies

Kyuujitsu touban Yakkyoku  
休日当番薬局

<b>June.1st (Sun)</b>	<ul style="list-style-type: none"> <li>● Suzuran pharmacy (Miya-machi ☎ 38-2303)</li> <li>● Mamiya pharmacy (Mamiyashin-machi kita 1chome ☎ 59-1022)</li> </ul>
<b>June.8th (Sun)</b>	<ul style="list-style-type: none"> <li>● Machino Pharmacy Ougi-machi ten (Ougi-machi 3 chome ☎ 37-1766)</li> <li>● Kusunoki pharmacy nishiwakamatsu-ten (Zaimoku-machi 1 chome ☎ 36-5188)</li> <li>● Iseki pharmacy (Omachi 2 chome ☎ 22-0363)</li> </ul>
<b>June.15th (Sun)</b>	<ul style="list-style-type: none"> <li>● Mamiya pharmacy (Mamiyashin-machi kita 1chome ☎ 59-1022)</li> <li>● E-ru Pharmacy Sengoku-ten (Higashisengoku 1 chome ☎ 36-6011)</li> <li>● Torimu pharmacy Yamaga ten (Hon-machi ☎ 38-3200)</li> </ul>
<b>June.22th (Sun)</b>	<ul style="list-style-type: none"> <li>● Aiyuu Pharmacy (Gyonin-machi ☎ 22-6878)</li> <li>● Aiai Pharmacy Monden Hiyoshi-ten (Niideraminami 1 chome ☎ 29-1666)</li> </ul>
<b>June.29th (Sun)</b>	<ul style="list-style-type: none"> <li>● E-ru Pharmacy Sengoku-ten (Higashisengoku 1 chome ☎ 36-6011)</li> <li>● Orange Pharmacy Kimoto (Syouwa-machi ☎ 93-6301)</li> </ul>

## Emergency medical care at night

Yakan Kyuubyou center  
夜間急病センター

The Night Emergency Clinic adopted a reservation-only policy. If you need a medical examination, please call ahead to make a reservation in advance. \*open every day of the year

▶ **Treatment field...**internal medicine, pediatrics

▶ **Reservations/Place...**Night Emergency Clinic (Yakan Kyubyo Center) (☎ 28-1199) (Yamagamachi 1-22)

▶ **Consultation...**7:00pm-11:00pm

▶ **Reception...** 6:30pm - 10:30pm

## ▼ Attention:

Aizu Wakamatsu Area Code=0242 \*Please dial the area code first.

## After-Hours Medical Facilities

Kyuujitsu touban Iin  
休日当番医院

June.1st (Sun)	Internal medicine	Sato Internal medicine ・ Pediatrics clinic 佐藤内科小児科医院	27-3786	Shinyoko-machi
	Surgery	Kobari Ear,nose,and throat clinic こばり耳鼻咽喉科クリニック	29-0800	Miya-machi
	Dentistry	Mamiya dental clinic 真宮歯科クリニック	58-0418	Mamiyashinmachi Minami 1 chome
June.8th (Sun)	Internal medicine	Ougi-machi Watanabe Pediatrics ・ allergy clinic 扇町渡部小児科アレルギー科医院	25-5515	Ougi-machi 3chome
	Surgery	Aizu clinic 会津クリニック	38-1150	Zaimoku-machi 1 chome
	Dentistry	Otake Dental clinic 大竹歯科医院	22-3835	Chuou 3chome
June.15th (Mon)	Internal medicine	Nihei clinic 二瓶クリニック	58-3885	Mamiyashinmachi kit a 1chome
	Surgery	Yamauchi Orthopedics clinic やまうち整形外科クリニック	85-7442	Higashisengoku 1 chome
	Dentistry	Oomura dental clinic 大村歯科医院	22-0195	Baba-machi
June.22th (Tue)	Internal medicine	Hasegawa Internal medicine, Gastroenterology 長谷川内科消化器科医院	22-7180	Gyounin-machi
	Surgery	Senba Ear, Nose, and Throat Clinic 仙波耳鼻咽喉科医院	26-4133	Iideraminami 1 chome
	Dentistry	Onda Dental clinic おんだ歯科医院	22-6311	Ikki-machi Tsuruga
June.29th (Sun)	Internal medicine ・ Pediatrics	Anazawa Clinic あなざわクリニック	29-2155	Kita Aoki
	Surgery	Rikishindo Higuchi Ophthalmology 力神堂ひぐち眼科	37-2977	Shouwa-machi
	Dentistry	Kabasawa Dental clinic 加羽沢歯科医院	26-0418	Sumiyoshi-machi

▶ Consultation Hours... ◎ *Internal Medicine ・ External Medicine ・ Pediatrician* ; 9:00am ~ 5:00pm

◎ *Dentist* ; 10:00am ~ 4:00pm

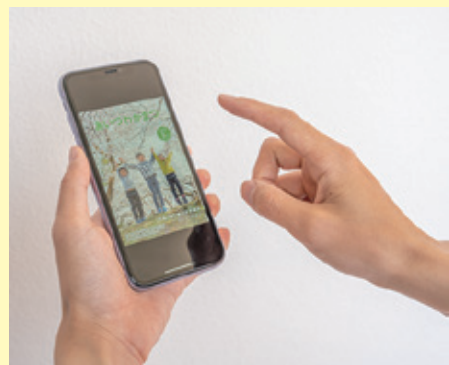
▶ Caution... You can check the doctor-on-duty for holidays on the City Homepage.

## You can freely browse information from the city government at any time!

いつでも気軽に市政だよりを見ることができます！

Feel free to try out “Catalog Pocket,” an electronic web browsing service from any smartphone or computer. This service offers multiple languages and is free to use. ※ The user is responsible for personal communication fees

●Contact... City Promotion Division (☎39-1206)



If you are receiving this newsletter and plan to change your address or leave Japan, please make sure to tell us of your new address or your departure date so that we may forward or cancel this newsletter.

Please contact us by phone, fax, or e-mail as soon as possible. Public information and Public Hearing Section (Kouhou Koucho group), Aizu Wakamatsu City Hall 3-46 Higashi Sakae-machi, Aizu Wakamatsu City, Fukushima 965-8601

• TEL: 0242-39-1206 FAX: 0242-39-1402

• Email: [promotion@tw.city.aizuwakamatsu.fukushima.jp](mailto:promotion@tw.city.aizuwakamatsu.fukushima.jp)

★Visit our home page! <http://www.city.aizuwakamatsu.fukushima.jp>  
/ in English and 中文 (体中文 繁体中文) 한글 ไทย

City Public  
Homepage



Living  
Information

