

Aizu Wakamatsu City Information

Published by Aizuwakamatsu City

July 2024



Opinions, Suggestions, Change of Address, Subscriptions
Secretarial and Public Hearing Division
Phone: 0242-39-1206
Fax: 0242-39-1402
Email:
hisho@tw.city.aizuwakamatsu.fukushima.jp

This newsletter is published by the Public Relations Section of City Hall, and is comprised of translated excerpts from the monthly Japanese newsletter, "Shisei Dayori".

Language Assistance
The Aizu Wakamatsu International Association
Open: 9am-5:45pm
Phone: 0242-27-3703 Fax: 0242-27-3704
E-mail: mail@awia.jp
Holidays: Every Sundays, Mondays, and national holidays.

To Protect Our ‘City’ and ‘Future’, Let’s Reduce our Garbage

私たちの「まち」と「未来」を守るため、燃やせるごみの減量にご協力ください

Aizuwakamatsu is 4th worst in the country for household garbage

In a study done in 2022, Aizuwakamatsu was ranked 4th worst for amount of household garbage produced per day per citizen when ranked against 232 similar sized municipalities. It was ranked worst in the prefecture.

Let’s Reduce Our Garbage to about 82.1 tonnes/day!

Following a 4 year trend in decline since about 2020, our city produced about 98.2 tonnes a day in 2023. To match the capacity of a new garbage processing plant to open in March 2026, we must reduce our daily average of garbage production by 16.1 tonnes, to be about 82.1 tonnes. Let’s each aim to reduce our burnable garbage output by about 150g/day (equivalent to about 1 banana.)

We Can Reduce Our Garbage!

Our city’s burnable garbage contains around 70% of kitchen waste, old papers, and plastic packaging etc.. If we reduce food waste, and separate our recycling, we can achieve our goal!

Reduce Garbage, For the Next Generation

Our city’s garbage situation is reaching critical levels. We need to reduce our garbage production by any means, which may mean by adding disposal fees. We are asking for your cooperation!

5 Things We Can Do

- ① Reduce Kitchen Waste At Home
 - Buy what you’ll eat!
 - Dispose of your kitchen waste at home!
- ② Reuse At Home!
 - Give your unwanted, but still usable items to your friends or family, or sell them to pawn shops or thrift stores.
- ③ Recycle At Home! (old papers, plastic packaging, old clothes)
 - Properly separate your recyclables (plastic packaging, small papers etc.)
 - Dispose of old clothes in Clothing Bins at places like City Hall, local community centres etc.
- ④ Recycle At Work! (old papers)
- ⑤ Prevent Food-loss At Work!
- **Contact:** Waste Management Division (☎27-3961)



Let's Practice Water Safety

水の事故を防止しましょう

When playing in the water this summer, stay safe with these tips:

- ▶ **Be Careful!** ◎ Do not enter dangerous areas. ◎ Don't swim if you're not feeling well, or have been drinking alcohol.
- ◎ Get away from risky areas during bad weather. ◎ Wear a life jacket when playing near water. ◎ Supervise children when playing in or around water. ◎ Contact 119 immediately in the event of an accident.
- ◎ **Contact:** Aizu Wakamatsu Fire Department (☎ 25-1200)

The Future of Nursing!

ミライノカイゴ

Want to experience a taste of the future of nursing?

- ▶ **Date:** July 26 (Fri) • 27th (Sat) 10:00-16:00
- ▶ **Place:** City Learning Centre (Aizu Keikodo)
- ▶ **Details:** See a Nursing Robot demonstration, Nursing Technique Show, talk with career advisors, and see a Nursing Skills Contest between different facilities! (*Event starts July 27th (Sat) from 14:00)
- ◎ **Contact:** Elderly Welfare Division (☎ 39-1247)

Local Produce Cooking Class

地産地消料理教室

Challenge yourself by learning to cook with Aizu grown rice flour and vegetables!

- ▶ **Date:** August 10 (Sat) 10:00-13:00
- ▶ **Place:** City Learning Centre (Aizu Keikodo)
- ▶ **Menu:** Aizu Summer Vegetable Pizza with Rice Flour and Aizu Vichyssoise (leek and potato soup)
- ▶ **Host:** Dietary Improvement Association
- ▶ **Limit:** 16 people
- ▶ **Cost:** ¥600
- ▶ **To Bring:** Apron, head bandana/cover
- ▶ **Sign-up Period:** July 1st (Mon) to 16th (Tue) *participants decided by lottery if many sign-up
- ◎ **Sign-up/Contact:** Agriculture Division (☎ 23-9973)

City Residents Swimming Competition

市民水泳大会

▶ **Categories/Times:**

◎ Diving: August 3rd (Sat) 10:00~

◎ Race: August 18 (Sun) *Elementary Aged from 9:00~, Junior High/General from 13:00~

▶ **Place:** Aizu Swimming Pool (City Pool)

▶ **Open to:** People living, studying, working in Aizuwakamatsu, from elementary age and up.

▶ **How to Apply:** Fill in the application, and send it in, alongside the ¥500 participation fee to the Sports Promotion Division by July 24th (Wed). *Elementary and Junior High aged children apply through their schools by July 16th (Tue).

◇ **Contact:** Sports Promotion Division (☎ 39-1306)

Wakasato-ko Lake Refreshing Festival 2024

若郷湖さわやかフェスティバル2024

Enjoy a variety of things including: stage performances like Yosakoi and Taiko Drum, an Okawa Dam tour, a dam lake patrol, or even catching fish with your bare hands!

▶ **Date:** August 3rd (Sat) 9:30-14:00

▶ **Place:** Okawa Dam, Wakasato-ko Lake East Park

◎ **Contact:** Urban Development and Improvement Division (☎ 39-1275)



Manabeko History and Culture Lecture

まなべこ歴史講座～デジタルで昔のまちを歩こう～

～ Walk Through the Historical Town, Digitally! ～

Using the Digital Archives, interact with important historical documents!

▶ **Date:** July 28th (Sun) 13:30~

▶ **Host:** City Learning Centre Staff

▶ **Limit:** 15 people

▶ **Aimed at:** Elementary grade 5 and up

▶ **Sign-up Start:** July 4th (Thu)~

◎ **Place/Contact:** Historical Records Center “Manabeko” (☎ 27-2705)

Aizu Urban Art Project 2024 Collab Project: Lacquerware Dying Eco Workshop

あいづまちなかアートプロジェクト連携企画「うるし染めエコ・ワークショップ」

Experience a dying workshop that's good for the environment, using the heartwood of lacquer trees,

Date: July 23rd (Tues) 10:00-12:00

▼**Host:** SUDO Seiichi, teacher at Aizu Norin Agricultural High School

▼**Aimed at:** people aged 18 and over

▼**Limit:** 10 people

▼**Participation Fee:** ¥500 (supplies)

▼**To Bring:** Apron

▼**Deadline:** July 16 (Tue)

▼**How to Sign-up:** Apply by contacting the Kita-Aizu Community Centre directly or by fax. *If you send a fax, please include your name, postal code, address, and phone number.

◇**Place/Contact:** Kita-Aizu Community Centre (☎58-3111)

Let's put out our garbage and recycling properly

正しく出そう ごみと資源物

Please put separated garbage and recycling at the designated location by 8:30a.m. on the correct day according your local collection schedule.

Holiday Garbage Collection

| | |
|-----------------|--------------------------------------------------|
| July 15th (Mon) | Except large-size garbage, pick up is as normal. |
|-----------------|--------------------------------------------------|



●Contact... Waste Management Division(☎ 27-3961)

Radiation Doses as of June 17th

housyasenryou jouhou 6 gatu 17 niti
放射線量情報 (6/17)

| Measurement Location | Measured Value | Measurement Location | Measured Value |
|-----------------------------------------------|----------------|-----------------------------|----------------|
| Aizu Wakamatsu CityHall | 0.04 | Kita Public Hall | 0.09 |
| Aizu Wakamatsu Station | 0.08 | Kozashi-machi Takaku | 0.09 |
| Higashiyama Elementary School | 0.07 | Kozashi-machi Kitashigo | 0.05 |
| Imoriyama Mountain Tourist Information Center | 0.09 | Kawahigashi-machi Takatsuka | 0.09 |
| Ikki-machi Tsuruga | 0.08 | Kawahigashi-machi Kumanodo | 0.08 |
| Matsunaga Danchi | 0.08 | Kawahigashi-machi Hirota | 0.05 |
| Yanagiwara-machi | 0.08 | Kitaizu-machi Shimoarai | 0.11 |
| Monden-machi Niidera | 0.08 | Kawanami Elementary School | 0.08 |
| Minami Public Hall | 0.08 | Oto Public Hall | 0.05 |
| Aizu General Athletic Park | 0.08 | Minato Citizen's Center | 0.04 |

※Measured in microsieverts / hour

After-Hours Pharmacies

Kyuujitsu touban Yakkyoku
休日当番薬局

| | |
|-------------------------|------------------------------------------------------------------------------------------------------------------------------------------------------------------------------------|
| July.7th (Sun) | ●Hiro pharmacy (Monden-machi Hiyoshi ☎ 36-5582) |
| July.14th (Sun) | ●Daian Pharmacy (Byakko-machi ☎ 39-0311) |
| July.15th (Mon) | ●Sekura pharmacy (Chuo 2 chome ☎ 39-3123) |
| July.21st (Sun) | ●Be-su Pharmacy Yamami-machi (Yamami-machi ☎ 93-6330) ●Dispensing pharmacy Zene Fa-mu Tateumaten (Tateuma-machi ☎ 85-8568) |
| July.28th (Sun) | ●Keyaki Yakkyoku (Oo-machi 1chome ☎ 29-5252) ●Kosumo Dispensing Pharmacy Nishisakaemachi ten (Nishisakae-machi ☎ 36-6039) ●Iseki pharmacy (Omachi 2chome ☎ 22-0363) |
| August.4th (Sun) | ●Mamiya pharmacy (Mamiyashin-machi kita 1chome ☎ 59-1022) ●Sengoku Chouzai Yakkyoku (Sengoku-machi ☎ 23-8336) |

Emergency medical care at night

Yakan Kyuubyou center
夜間急病センター

The Night Emergency Clinic adopted a reservation-only policy. If you need a medical examination, please call ahead to make a reservation in advance. *open every day of the year

▶ **Treatment field...** internal medicine, pediatrics

▶ **Reservations/Place...** Night Emergency Clinic (Yakan Kyubyo Center) (☎ 28-1199) (Yamagamachi 1-22)

▶ **Consultation...** 7:00pm-11:00pm

▶ **Reception...** 6:30pm - 10:30pm

▼ Attention:

Aizu Wakamatsu Area Code=0242 *Please dial the area code first.

After-Hours Medical Facilities

Kyuujitsu touban Iin
休日当番医院

| | | | | |
|---------------------|-----------------------------------|-------------------------------------------------------------------|---------|--------------------------------|
| July.7th (Sun) | Internal medicine | Ito Internalmedicine,Gastroenterology clinic いとう内科消化器科クリニック | 38-3733 | Monden-machi Hiyoshi |
| | Surgery | Ami Woman's clinic あみウイメンズクリニック | 37-1456 | Yasumi-machi |
| | Dentistry | Morikawa Dental clinic 森川歯科クリニック | 32-5648 | Omashi 1 chome |
| July.14th (Sun) | Internal medicine | Inaniwa clinic いなにわ医院 | 76-1728 | Kawahigashi-machi Yazawa |
| | Surgery | Ebitani Orthopedics 蛭谷整形外科医院 | 24-6511 | Byakko 1chome |
| | Dentistry | Yatabe Dental clinic やたべ歯科医院 | 27-5791 | Ohata-machi |
| July.15th (Mon) | Internal medicine | Arakawa Gastroenterology, Internalmedicine clinic 荒川胃腸科内科クリニック | 32-2201 | Chuo 2 chome |
| | Surgery | Anazawa Ear,nose,and throat clinic 穴沢耳鼻咽喉科医院 | 29-0033 | Tenjin-machi |
| | Dentistry | Yanada Dental clinic やなだ歯科医院 | 27-6934 | Yugawa-machi |
| July.21st (Sun) | Internal medicine · Pediatrics | Yamami child Clinic やまみこどもクリニック | 23-4115 | Yamami 2 chome |
| | Surgery | Tateuma Clinic たてうまクリニック | 29-2112 | Tateuma-machi |
| | Dentistry | Yamaguchi Dental clinic 山口歯科医院 | 28-6482 | Naka-machi |
| July.28th (Sun) | Internal medicine · Pediatrics | Yoshida Internalmedicine clinic 吉田内科 | 27-0537 | Naka-machi |
| | Surgery | Ear, nose, andthroat Suzuki Clinic 耳鼻咽喉科鈴木医院 | 28-3387 | Nishisakae-machi |
| | Dentistry | Meguro Dental clinic 目黒歯科医院 | 23-1182 | Ekimae-machi |
| August.4th (Sun) | Internal medicine · Pediatrics | Nihei clinic 二瓶クリニック | 58-3885 | Mamiyashinmachi kita 1chome |
| | Surgery | Kabeya Ear, nose, andthroat Clinic かべや耳鼻咽喉科 | 24-4133 | Sengoku-machi |
| | Dentistry | Ikki Dental clinic 一箕歯科医院 | 22-1184 | Ikki-machi tsuruga |

▶ Consultation Hours... ◎ *Internal Medicine · External Medicine · Pediatrician* ; 9:00am ~ 5:00pm
◎ *Dentist* ; 10:00am ~ 4:00pm

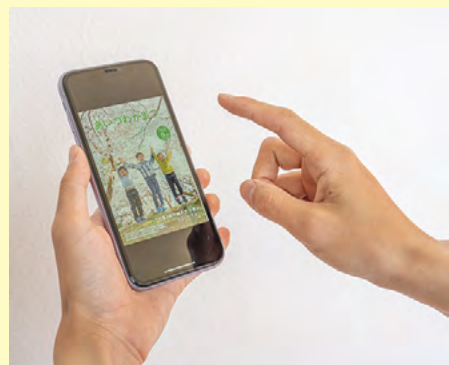
▶ Caution... You can check the doctor-on-duty for holidays on the City Homepage.

You can freely browse information from the city government at any time!

いつでも気軽に市政だよりを見ることができます！

Feel free to try out “Catalog Pocket,” an electronic web browsing service from any smartphone or computer. This service offers multiple languages and is free to use. ※ The user is responsible for personal communication fees

●Contact... Secretary Public Information Division
(☎39-1206)



If you are receiving this newsletter and plan to change your address or leave Japan, please make sure to tell us of your new address or your departure date so that we may forward or cancel this newsletter.

Please contact us by phone, fax, or e-mail as soon as possible. Public information and Public Hearing Section (Kouhou Koucho group), Aizu Wakamatsu City Hall 3-46 Higashi Sakae-machi, Aizu Wakamatsu City, Fukushima 965-8601

• TEL: 0242-39-1206 FAX: 0242-39-1402

• Email: hisho@tw.city.aizuwakamatsu.fukushima.jp

★Visit our home page! <http://www.city.aizuwakamatsu.fukushima.jp>
/ in English and 中文 (体中文 繁体中文) 한글 ไทย

City Public
Homepage



Living
Information

